

Getting the Information and Resources You Need for Child Care Recovery and Stabilization



A New Hampshire Department of Health and Human Services Webinar
Hosted by Child Care Aware of New Hampshire
Thursday, October 15, 2020, 12:30 – 2:00 PM

We will begin promptly at 12:30

Hello And a Few Logistics!

How things will work on the call today:

- Everyone is muted so we can all hear well
- If you are having any difficulty, please call or text Donna Lake at **(603) 903-0830**



.....And a Few More Logistics

To get professional development hours for today's call:

- If you are on a computer, write the name of your program and your full name(s) in the Zoom Chat
- If you are participating by phone, send an email to ccrrtraining@snhs.org with the name of your program and your full name(s)

.....And a Few More Logistics

To ask questions, make comments or share your ideas:

- If you are on a computer, use the Q&A box
- If you are participating by phone, send an email to:
ccrtraining@snhs.org

*Please note: Questions will be shared at the end of each portion of today's presentation **as well as** at the end of the PowerPoint; the Q&A box will be hidden throughout the presentation.*

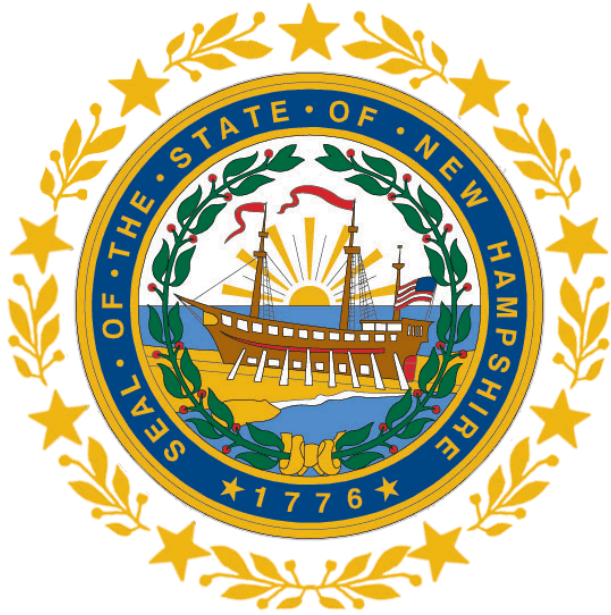
This presentation will be recorded. The recording of the call and the questions will be posted at:

<http://nh.childcareaware.org/>



We Will Now Begin Recording

Getting the Information and Resources You Need for Child Care Recovery and Stabilization



A New Hampshire Department of Health and Human Services Webinar
Hosted by Child Care Aware of New Hampshire
Thursday, October 15, 12:30 – 2:00 PM

We will begin promptly at 12:30

Today's Speakers (In Order) Are:



Stephanie Therrien
Host, CCAoNH



Joan Izen
Project Director, PTAN



Rob Corso
Executive Director
Pyramid Model Consortium



Debra Nelson
NH DHHS BCDHSC



Melissa Clement
NH DHHS CCLU



Krisha Dubreuil
NH DHHS BCDHSC



Theresa Peck
NH DHHS CCLU



Dianne Chase
NH DHHS BCDHSC



Emma Heath
NH DHHS BCDHSC

Agenda

Getting the Information and Resources You Need for Child Care Recovery and Stabilization

Thursday, October 15, 2020: 12:30 – 2:00 PM

1. Welcome & Logistics: Stephanie Therrien
2. Statewide Implementation of the Pyramid Model: Rob Corso, Joan Izen
3. DEHS Update: Celebrating New Beginnings: Debra Nelson
4. CCLU Update: Melissa Clement
5. Bureau of Child Development and Head Start Collaboration (BCDHSC) Update:
Krisha Dubreuil & Theresa Peck
Dianne Chase
6. Child Care Aware of NH (CCAoNH) Update: Stephanie Therrien
7. Q & A: Emma Heath

Statewide Implementation of the Pyramid Model

Rob Corso, PhD

Executive Director

Pyramid Model Consortium



**THE
PYRAMID MODEL
CONSORTIUM**

Supporting Early Childhood PBIS

Joan Izen MA, CCC/SLP

PTAN Project Director

Statewide Implementation

The map displays the following states categorized by implementation group:

- CSEFEL/TACSEI States (Light Green):** AK, CA, CO, CT, DE, HI, IL, IN, IA, KS, KY, MA, MD, MN, MO, NE, NH, NJ, NY, NC, NM, NV, OH, OK, OR, RI, SC, TN, TX, VA, WV, WI, WY.
- PMC States (Blue):** WA, MT, ID, UT, AZ, NM, KS, OK, MS, AL, GA, FL, PA, NY, VT, ME, NH, MA, CT, RI, NJ, DE, MD, DC.
- Not Implemented (Gray):** ND, SD, NE, IA, MO, AR, LA, TX, MI, WI, IL, IN, OH, KY, TN, AL, GA, FL, PA, NY, VT, ME, NH, MA, CT, RI, NJ, DE, MD, DC.

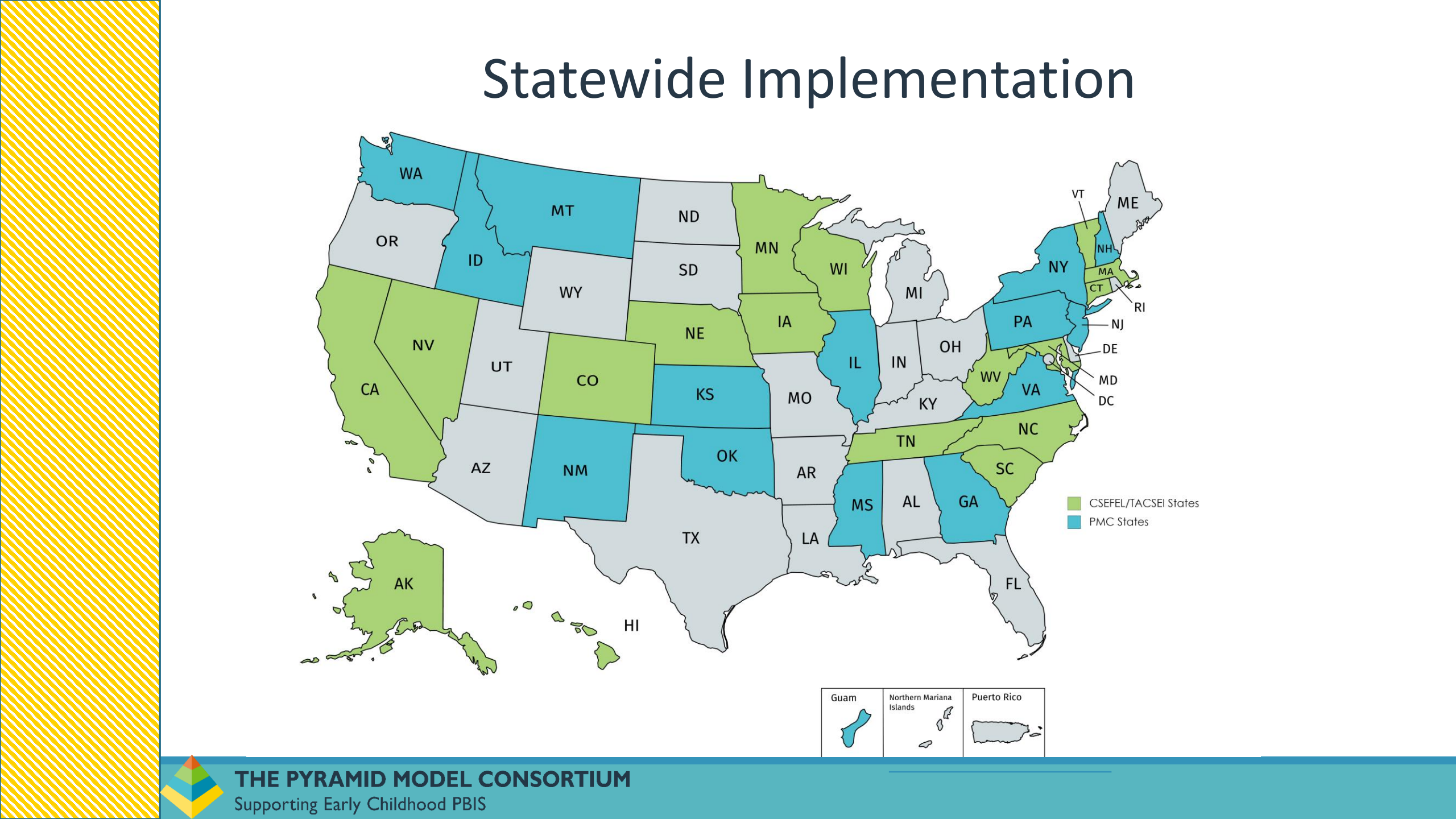
Legend:

- CSEFEL/TACSEI States
- PMC States

Inset maps show:

- Guam
- Northern Mariana Islands
- Puerto Rico

THE PYRAMID MODEL CONSORTIUM
Supporting Early Childhood PBIS

[illegible]

Statewide Implementation

A map of the United States where states are color-coded based on their implementation status. Light green states include CA, NV, CO, NM, AK, HI, MN, WI, IA, NE, KS, OK, TN, NC, SC, GA, FL, VT, NH, MA, CT, RI, DE, MD, VA, WV, IL, IN, OH, KY, MI, MO, AR, LA, TX, WY, UT, AZ, OR, WA, MT, ND, SD, ME, NJ, PA, NY, and DC. Blue states include ID, MT, ND, SD, MN, WI, IA, NE, KS, OK, TN, NC, SC, GA, MS, AL, and FL. A legend indicates that light green represents CSEFEL/TACSEI States and blue represents PMC States.

CSEFEL/TACSEI States
PMC States

Guam	Northern Mariana Islands	Puerto Rico

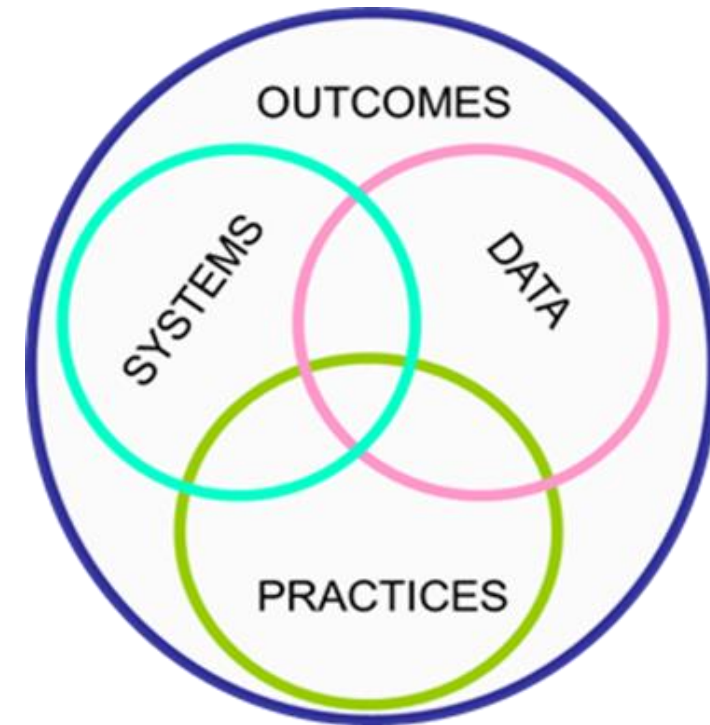
THE PYRAMID MODEL CONSORTIUM
Supporting Early Childhood PBIS

Pyramid Model Implementation

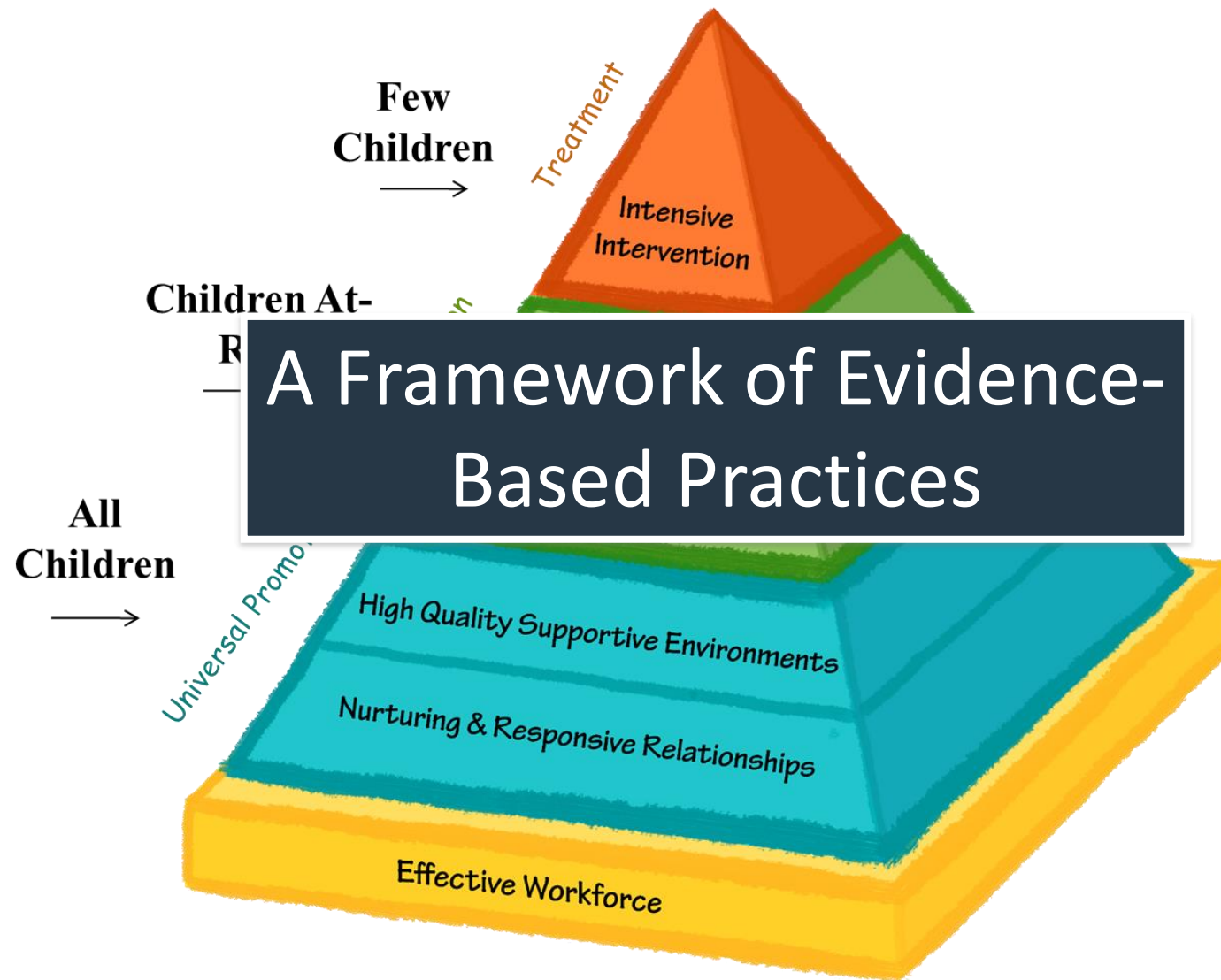
Systems approach for establishing the program culture and individualized supports for supporting social emotional competence

- Measurable outcomes
- Data decision making
- Evidence-based interventions
- Systems supports

AVOID JUST TRAINING APPROACH



Pyramid Model



4 Essential Structures



The diagram illustrates four essential structures for supporting early childhood PBIS. It features a vertical stack of three colored rounded rectangles on the left: orange at the top, blue in the middle, and green at the bottom. To the right of this stack is a single, taller yellow rounded rectangle. A thin horizontal line spans the width of the diagram behind the stacked rectangles. The text 'State Leadership Team' is centered in the orange rectangle, 'Master Cadre (Network of Program Coaches)' is centered in the blue rectangle, 'Implementation Sites' is centered in the green rectangle, and 'Data' is centered in the yellow rectangle.

State Leadership Team

Master Cadre
(Network of Program
Coaches)

Implementation Sites

Data



iSocial

-
- Community Collaboratives – child care programs (8 programs)
 - Process Coaches
 - Practice Based Coaches
 - On-going Professional Development events



Preschool Development Grant B-5

-
- Master Cadre/Network of Professional Development Providers
 - Child Care Cohort (4 programs)
 - Statewide Leadership Team
 - Statewide Coordinator through CCA of NH
 - LAUNCH Manchester (4 programs)
 - Peer Learning Collaboratives for ePyramid Modules



ePyramid

Self-Paced On-Line
Learning Modules

A new way to access
Pyramid Model training &
support long-term outcomes!



Announcing New Module!

**"Highlighting Culturally Responsive Practices in the Pyramid Model
to Reduce Implicit Bias, Disproportionality, Suspensions and Expulsions"**

COURSE CATALOG

CDA TRAINING

ANNUAL SUBSCRIPTIONS

RESOURCES

ABOUT US

Find a Course

State Required*

New Hampshire



SEARCH

CREATE AN ACCOUNT



New Hampshire Access

Infant Toddler Course

- Mod 1
- Mod 2
- Mod 3

Preschool Course

- Mod 1
- Mod 2
- Mod 3

Birth to Five Course

- Mod 1
- Mod 2
- Mod 3



Culturally Responsive Care/Implicit Bias - Dr. Rosemarie Allen



Disproportionality may occur in situations other than suspensions:



- Classroom discipline
- Referrals to the Director/Principal
- Sending a child home early
- Sending a child to another classroom

In what ways have you witnessed or heard about disproportionality in your setting?

Dr. Neal Horren

“Trauma Informed Care and the Pyramid Model”

“Staff Wellness”



Neal Horen, PhD.

Trauma-Informed Care

- Trauma and its impact on children
- A trauma-informed Pyramid Model
- How to view children's experiences through a trauma-informed lens
- Strategies for introducing protective factors and building resilience



THE PYRAMID MODEL CONSORTIUM
Supporting Early Childhood PBIS

Wellness: Taking Care of Yourself

- Why it's important to take care of yourself
- Research on teacher wellness and how it can impact teaching practices
- The impact of caring for others on your health



THE PYRAMID MODEL CONSORTIUM
Supporting Early Childhood PBIS



The Pyramid Model
Consortium

Institutes of Higher Education

- Support monthly Peer Learning Community
- Early Childhood Programs
- Integration of Pyramid Model into Syllabi





Questions?



Contact Information:

Rob Corso

rob.corso@pyramidmodel.org

217-390-0403

Joan Izen

jizen@seresc.net

DEHS Update

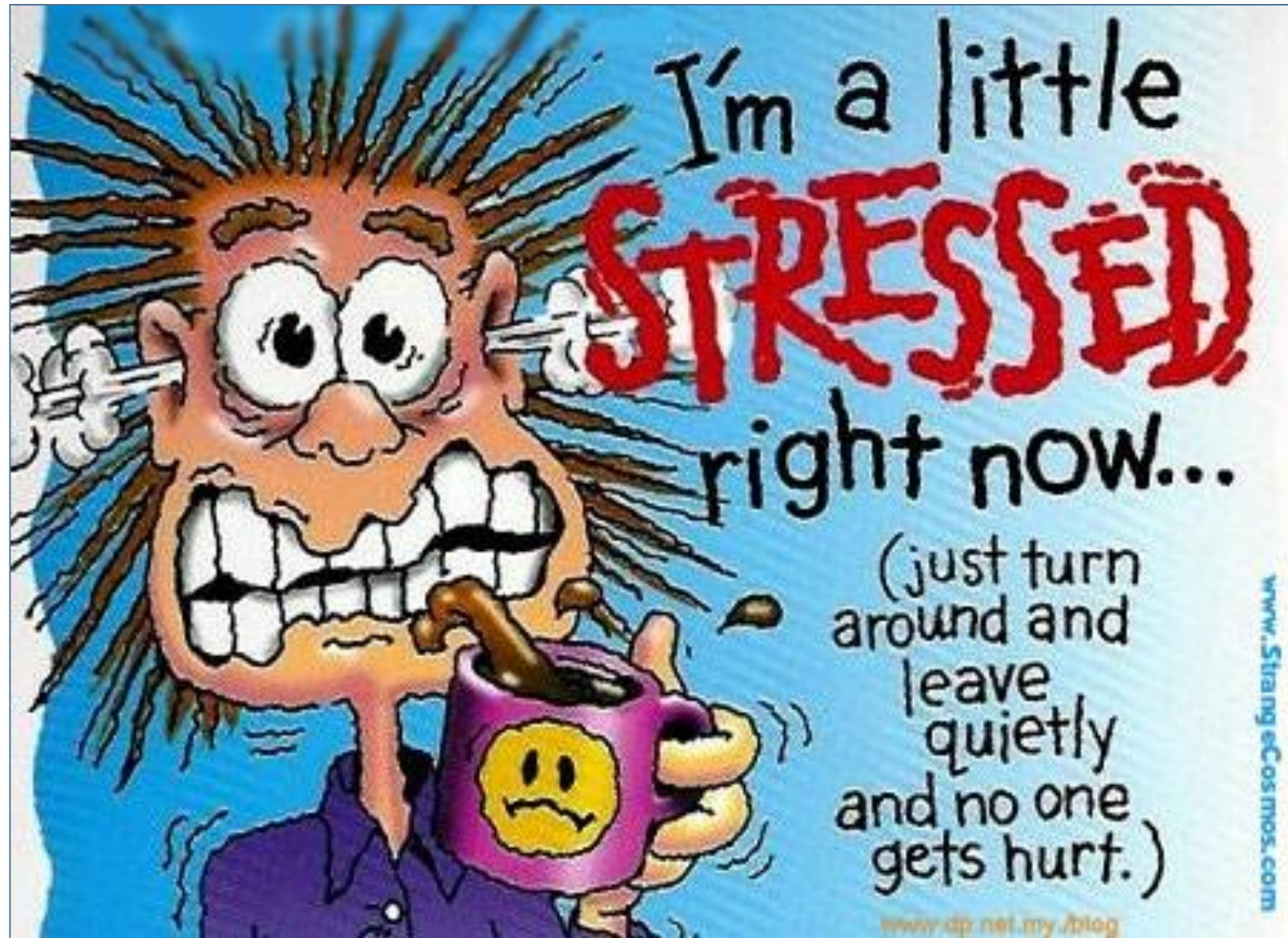


Celebrating New Beginnings!

Debra Nelson, Bureau Chief, Child Development
and
Head Start Collaboration (BCDHSC)







www.5tra ng eCosmos.com

www.dp.net.my/blog







Child Care Licensing Unit Update

Melissa Clement, Chief, CCLU



BCDHSC Update

- NH Connections

Krisha Dubreuil, Program Specialist BCDHSC & Theresa Peck, Licensing Supervisor CCLU

- CCRSP

- NHEYF

- CCCAS

- Workforce Study

- Market Rate Survey

Dianne Chase, Assistant Bureau Chief BCDHSC



NH C NNNECTIONS

Growing our children's future together

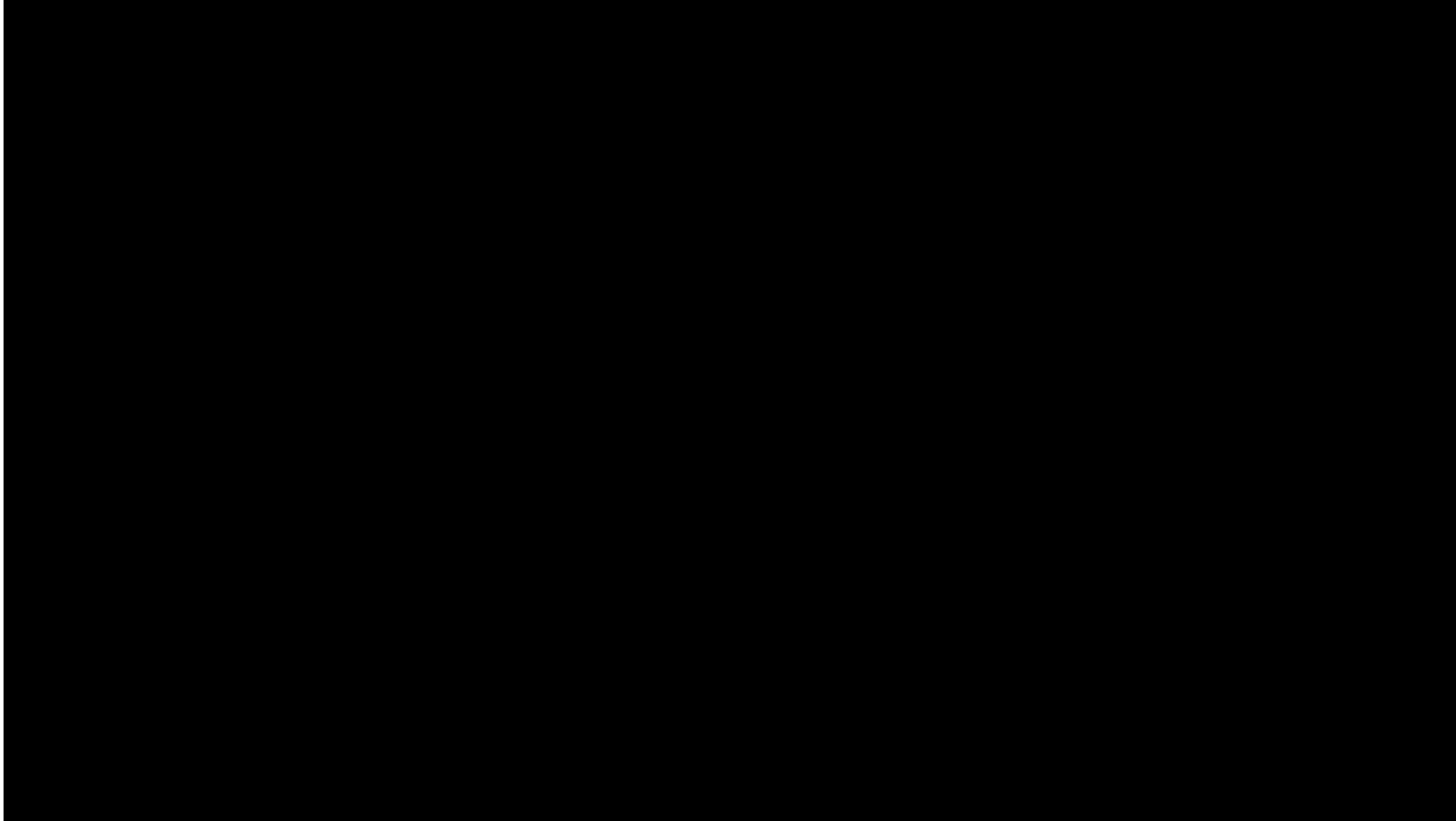
INFORMATION SYSTEM

ALL FAMILIES WILL FIND RESOURCES TO MAKE INFORMED DECISIONS ABOUT CHILD CARE SERVICES THAT MEET THEIR NEEDS. NH PROFESSIONALS, POLICY MAKERS, AND PARTNERS WILL USE THE SYSTEM INFORMATION TO MAKE DATA-DRIVEN DECISIONS THAT IMPROVE PROFESSIONALISM AND WORKFORCE QUALITY TO POSITIVELY IMPACT CHILDREN.

New Hampshire Child Care Search Portal

- Enhances/combines current CCLU system & Child Care Aware of NH Search Feature to provide tailored list of available early child care, afterschool and/or school age, and Head Start programs for families seeking care
- Programs can:
 - Highlight unique program qualities
 - Provide information to families on hours, availability & rates, should they wish to do so
- 24/7 access to make necessary changes
- One part of NH Connections Information System
- Please note: This portal is mobile and PC friendly, however, it cannot be accessed from Internet Explorer

The NH Child Care Search Portal: Video



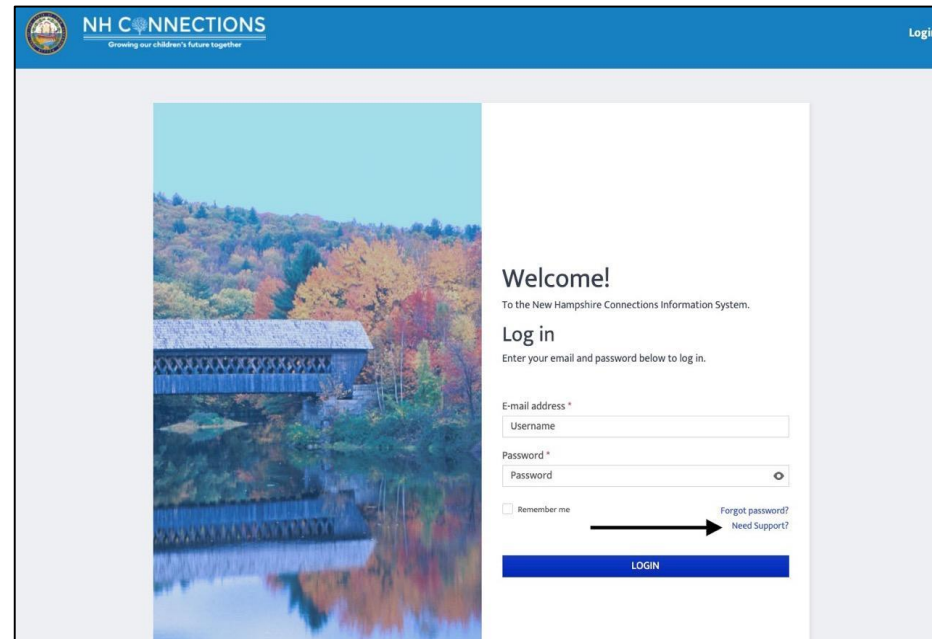


Coming Soon!

Access to NH Connections Information System:

Contact Child Care Aware of New Hampshire for assistance in accessing the Child Care Search portal

- Email at ccrtraining@snhs.org or call at [1-855-393-1731](tel:1-855-393-1731) OR [\(603\) 578-1386](tel:603-578-1386)
- CCAoNH Live Chat Support



The screenshot shows the login interface for the NH CONNECTIONS Information System. The header features the NH CONNECTIONS logo with the tagline "Growing our children's future together" and a "Login" link. The main content area is split: the left side displays a scenic image of a covered bridge over a river with autumn foliage, and the right side contains the login form. The form includes a "Welcome!" message, a "Log in" heading, and instructions to "Enter your email and password below to log in." It features input fields for "E-mail address * Username" and "Password * Password", a "Remember me" checkbox, and links for "Forgot password?" and "Need Support?". A blue "LOGIN" button is at the bottom of the form.

BCDHSC Updates:

Dianne Chase, Assistance Bureau Chief

- CCRSP (Child Care Recovery and Stabilization Program)
- NHEYP (New Hampshire Empower Youth Program)
- CCCAS (Covid-19 Child Care Assistance Supplement)
- Workforce Study
- Market Rate Survey



CCAoNH Reminders & Updates

- **CCAoNH TA and Support on Child Care Search Portal**
- **CCRSP E-Community Collaborative**
- **Training Tied to COVID with ProSolutions**
- **Short Survey**
- **Updated Website, www.nh.childcareaware.org**
 - **New Website coming late October/early November**
- **Virtual Annual Training Calendar for 2020-21 is available**
 - **New Website Site coming late October/early November**



Questions & Comments

